



ENA 8

Quick Reference Guide

(English)

First Time with ENA 8


Equipment required:

- Bean (Bean container)
- Water (Water Tank)
- Milk tube (connecting machine & milk container)

These short instructions do not replace the » ENA 8 Instructions for Use«. Make sure you read and observe the safety information and warnings first in order to avoid hazards.

»Display«

Water Hardness

1 

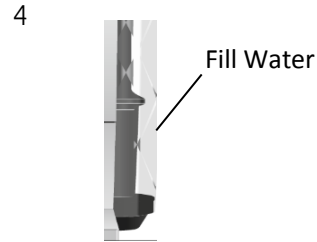
tauchen leicht ab- und nachlesen. Dip briefly (1 sec), shake off excess water and compare after 1 min. Plongez brièvement (1 sec), égouttez l'excès d'eau et comparez après 1 min.

| | | | | |
|-----------|---|--------|----------|-----------|
| reenviert | | <3°dH | <3,75°e | <5,4°f |
| rouge | ■ | 3-4°dH | 3,75-5°e | 5,4-7,2°f |
| rouge | ■ | 4-6°dH | 5-10,5°e | 7,2-11°f |
| rouge | ■ | >14°dH | >17,5°e | >25,2°f |

Press the '<' or '>' button to change the setting for the water hardness.

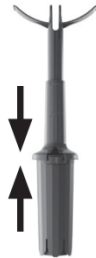
Filter Cartridge Activation

»Filter operation/ Insert filter«
»OK«

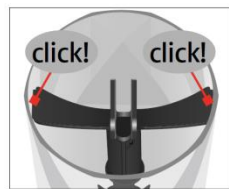


5
»Saved«
»Filter is being rinsed«

2 Fit the filter cartridge extension



3 Insert filter

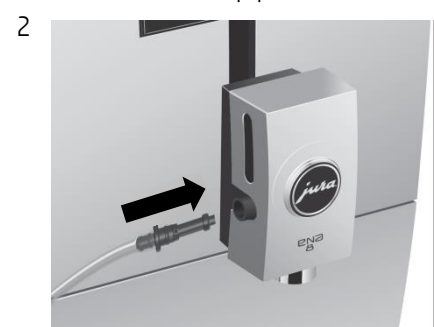


Connecting milk

Remove the protective cover



Attach the milk pipe



How to make coffee

Equipment required:

- Bean (Bean container)
- Water (Water Tank)
- Milk tube (connecting machine & milk container)

These short instructions do not replace the » ENA 8 Instructions for Use«. Make sure you read and observe the safety information and warnings first in order to avoid hazards.

»Display«



- 2 Select Coffee by pressing “-” button next to ◀ / ▶

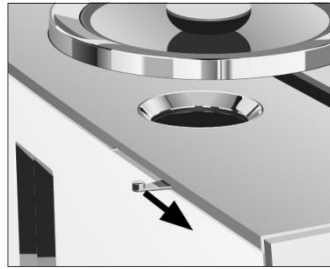


- 3 Confirm Coffee by pressing “O” button

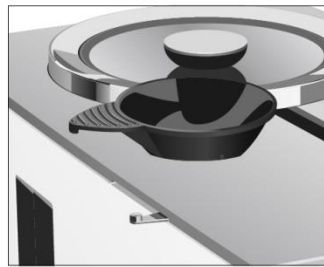


Ground Coffee

- 1 Open the powder chute for ground coffee



- 2 » Ground coffee « / » Please add ground coffee «



Fit the filler funnel for ground coffee & Add ground (one spoon)

- 3 Confirm Espresso by pressing “O” button



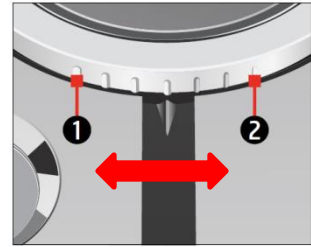
- 4 Your coffee is ready



Adjusting the grinder (ground size)

Grinding wheel (see image)

- 1: Coarse consistency of grind setting
- 2: Fine consistency of grind setting



Turn the wheel to desired position while the grinder is running (Make a coffee)

Permanent setting (Coffee Strength/Water) For Coffee & Drinks

Option 1

Press “-” button next to “P” for 2 sec go to Programme mode – 1/2 Product setting



Option 1

Option 2

OR

Option 2

Press “O” next to ‘Coffee’ button for 2 sec
Press the ‘Coffee strength’ / ‘Volume’ button
Press “-” button next to ◀ / ▶ to change the setting
Press ‘Save’

» Saved «



Cleaning the milk system

Approximate duration 2 min.

Equipment required:
JURA Milk system cleaner



These short instructions do not replace the » ENA 8 Instructions for Use«. Make sure you read and observe the safety information and warnings first in order to avoid hazards.

»Display«

Precondition:
Cleaning the milk system



2 Press "—" button next to "P" for 2 sec go to Programme mode – 1/2 Maintenance Status



3 Press » Clean the milk system «

Add milk system cleanser & water



Connect the milk tube



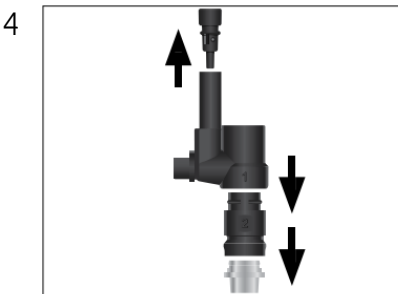
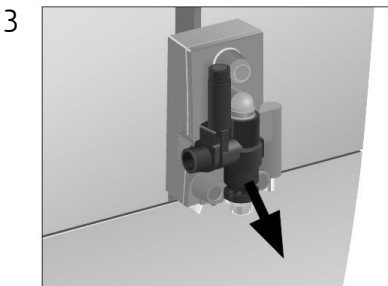
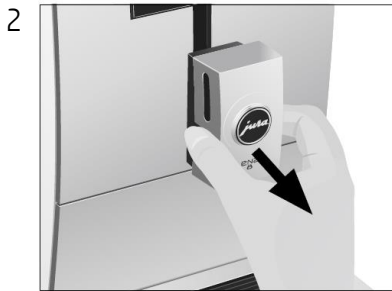
6 Press »Start«
Press »Next«

» Milk System is being cleaned «
» Fresh Water«

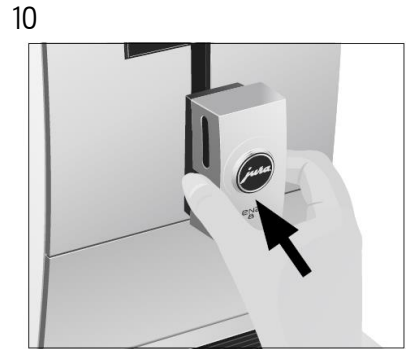
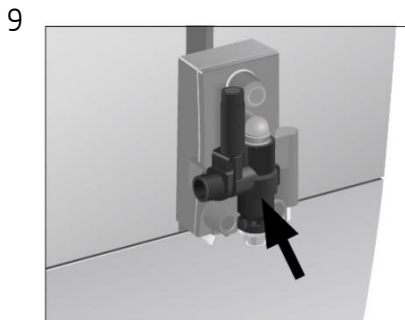
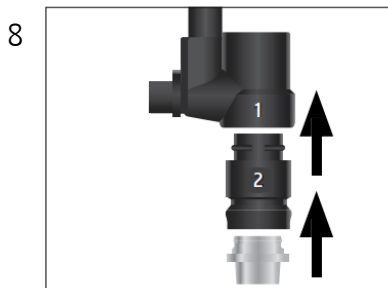
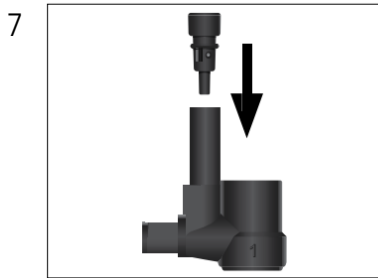


10 Press »Next«
» Milk System is being cleaned «

Dismantling and rinsing The fine frother (Deep Cleaning)



With severely dried-on milk residues



ENA 8

Changing the filter

Approximate duration 3-5min.

Equipment required:
JURA Filter cartridge CLARIS
Smart / Smart Mini

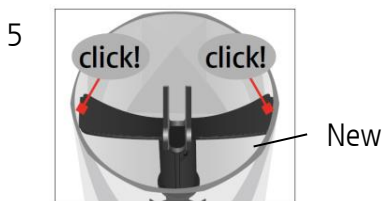
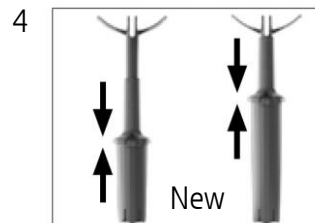
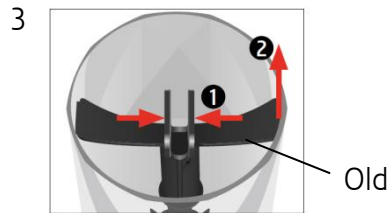
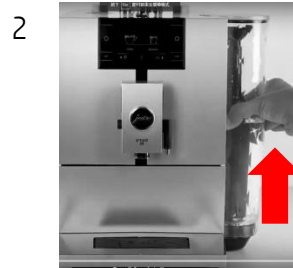


These short instructions do not replace the » ENA 8 Instructions for Use«. Make sure you read and observe the safety information and warnings first in order to avoid hazards.

»Display«



Precondition:



6 » Filter is being rinsed «

Descaling the machine

Approximate duration 40 min.
If you are using filter mode, you will not prompted to descale.

Equipment required:
JURA 2-phase descaling tablets



These short instructions do not replace the » ENA 8 Instructions for Use«. Make sure you read and observe the safety information and warnings first in order to avoid hazards.

»Display«

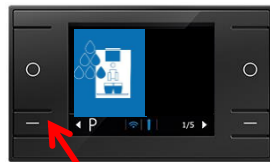
*Completely dissolve in several min.

Precondition:

»Descaling the machine«

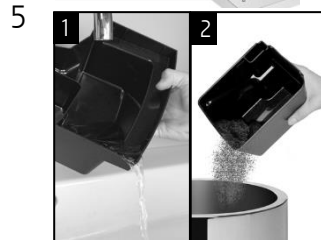


2 Press “—” button next to “P” for 2 sec go to Programme mode – 1/2 Maintenance Status



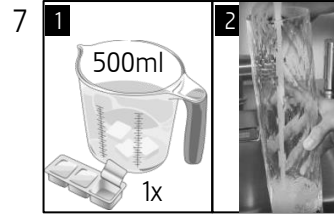
3 »Descal« - 2/3
» Start«
» Next«

4 »Empty drip tray«



» Agent in tank«

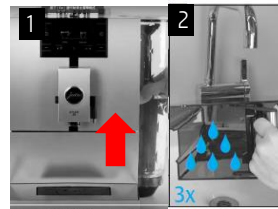
»Pour descaling agent* into empty water tank«



9 »Next«
»Machine is being descaled«

10 Repeat Step 4-6

»Rinse Water Tank«



11 »Fill water tank«



12 »Next«
»Machine is being descaled«
Repeat Steps 4-6

Cleaning the machine

Approximate duration 20 min.

Equipment required:
JURA 2-phase-cleaning tablets



These short instructions do not replace the » ENA 8 Instructions for Use«. Make sure you read and observe the safety information and warnings first in order to avoid hazards.

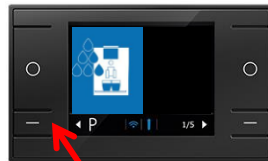
»Display«

Precondition:

»Clean the machine «

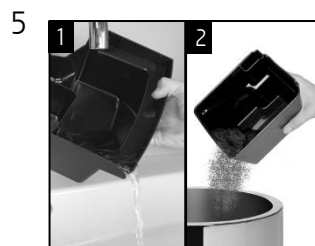


2 Press “-” button next to “P” for 2 sec go to Programme mode – 1/2 Maintenance Status

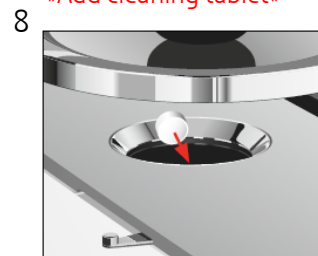


3 » Clean «
» Start «
» Next «

4 Empty coffee grounds container



» Next «
» Add cleaning tablet «



9 » Clean «
» Start «
» Machine is being cleaned «

Repeat Step 4-6